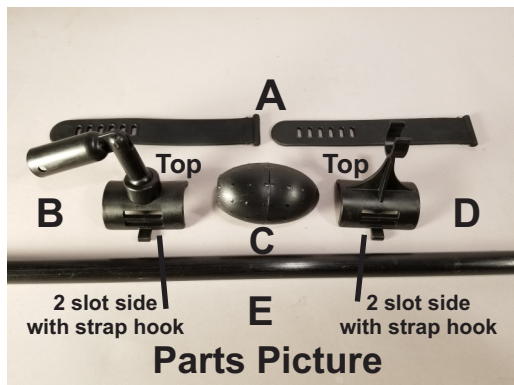




# Doc's Nugget Stalker™ Brand SAGA™ Swing Assist Guide Arm INSTRUCTIONS FOR INSTALLATION

**IMPORTANT!** Save yourself a lot of aggravation. Read **ALL** of the Instructions through first, before beginning assembly.



## Parts List:

- A. 2 Rubber Straps
- B. 360 Degree Pivot attachment joint
- C. Egg Shaped Handle
- D. Rod Storage Clip
- E. 35 inch long fiberglass rod

**Step #1** Insert straps (A) into Part B and D as follows:

On part B and D, you will notice one side has two slots and a strap hook, and the other side has one slot. Place Parts B and D on a table with the side that has two slots facing you as shown in the **Parts Picture** above.

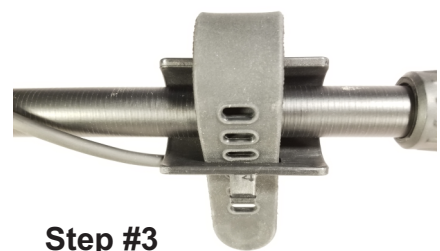
You are going to use the two straps provided, and insert one strap in each part. The straps have one end that has a thick part and the opposite end is a tip that is rounded and it has holes towards that end. The side of the Parts B and D that have the pivot joint, or clip, we will call the top. The underside, we will call the cradle.

Place Part B and D, with the 2 slot side towards you, as in the **Parts Picture** above. Take the rounded end of the strap and insert it into the top slot on each part and pull the strap through.



**Step #2** Lay the detector rod into the cradle side of the part you are going to attach as shown in the picture to the left. Thread the strap through the single slot side, pull it out through the front of the part pulling it away from you as shown in the picture Step #2. Attach Part B closest to the coil. Attach Part D closest to you.

**Step #3** Now bring the strap back towards you and thread it through the empty slot on the double slot side of the cradle underside. Bring the strap out of the slot on the top side by the attachment hook. Tug it to make it secure and place the appropriate hole over the attachment hook.



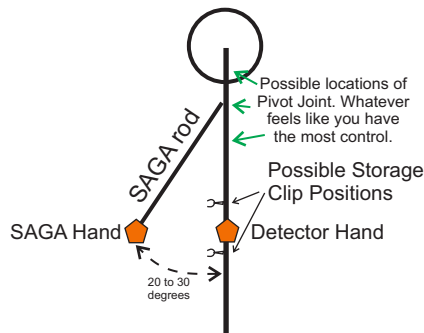
**Step #4** Repeat the procedure for the remaining part B or D. Part D, the rod storage clip, should be positioned either in front of or behind the control head. Exact placement is not critical.

**Step #5** Attaching the 35 inch long rod. Attaching the rod is a simple procedure. Take note of the fact that one end of the rod has a push button, and the other end is plain. If the rod is too long and you decide to cut it, cutting must be done on the **PLAIN END**. **DO NOT cut the end with the button.** (instructions continue on next page)

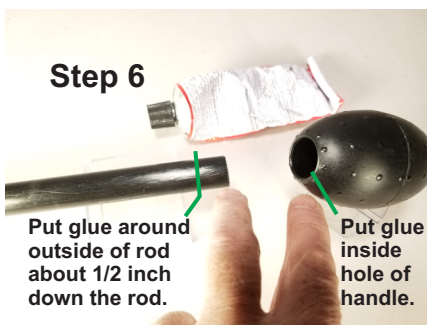


**Step #5 (continued)** After identifying the end of the fiberglass rod that has the button, simply slip it into the 360 degree pivot joint rod sleeve. Do this by pushing the button in and sliding the rod into place, allowing the button to pop into the hole.

I would advise you not to cut the rod as of yet. Also do not glue the handle in place. Instead, you should swing your detector with the Swing Assist Guide Arm by only holding onto the rod without the handle. Get a sense of how it feels most comfortable. Do you need to move the pivot joint further away from you, or closer? Which position feels like it gives you the most control? Error on the side of having it closer to the coil. If later you decide the Joint is too low, and you have already glued the handle on, you can move the Pivot Joint up the detector rod. Using a hacksaw and dust mask, remove the button from the end of the SAGA™ rod, trim the rod to the appropriate length, drill a new hole and reinsert the button.



Once you feel comfortable with the position of Part B, the 360 degree pivot joint, and you're confident of what length you want the rod to be, you are ready to move onto Step 6. (Hint, the proper length of the fiberglass rod is generally as follows. When the SAGA™ rod is swung out and away from the detector at approximately 20 to 30 degrees, this is the position it is normally used. Your hand on the SAGA™ rod should be at approximately the same position as your other hand that is holding your detector. You are trying to achieve balanced bi-lateral movement. When you swing the SAGA™ arm back into the storage clip, the handle will probably be a little above where your hand holds the detector.



**Step #6** Gluing the handle, **Part C**. When you are confident you know how long you want the rod, get a dust mask and a hacksaw. Mark the NON-BUTTON end where you want to cut it. Put on your dust mask and cut the end off. Do not breathe in the fiberglass dust.

Inside the egg shaped handle, opposite the end where the hole is at, is a seat that the rod sits into. Put a thin layer of glue around the end of the rod on the outside of the rod for 1/2 inch, and a thin layer inside the hole of the handle. I recommend using Clear Gorilla Glue, or Shoe Goo. See the Step 6 picture to the left. After installing the handle, clean off any excess glue and allow the handle to set up for 24 hours.

You should be all ready to enjoy more comfortable Swinging with your new Doc's SAGA™ Swing Assist Guide Arm!

Remember, if you have already glued your handle on, but feel the rod is still too long, all is not lost. Remove the button end of the rod from the Pivot Joint. Carefully remove the button from the rod. Use a dust mask and re-trim the end, re-drill the hole for the button and reinsert the button.



Questions: email me at [docsdetecting@gmail.com](mailto:docsdetecting@gmail.com)